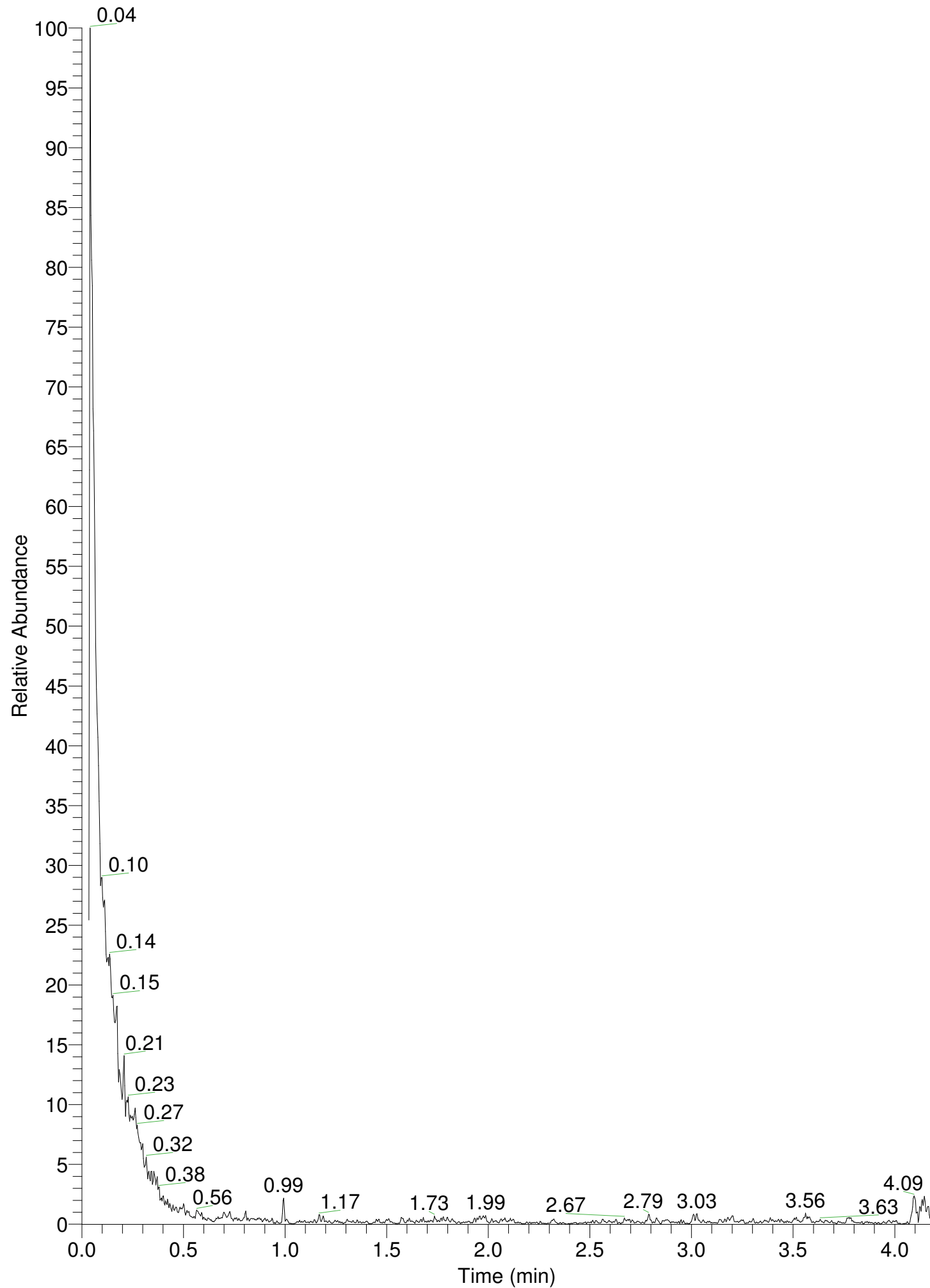


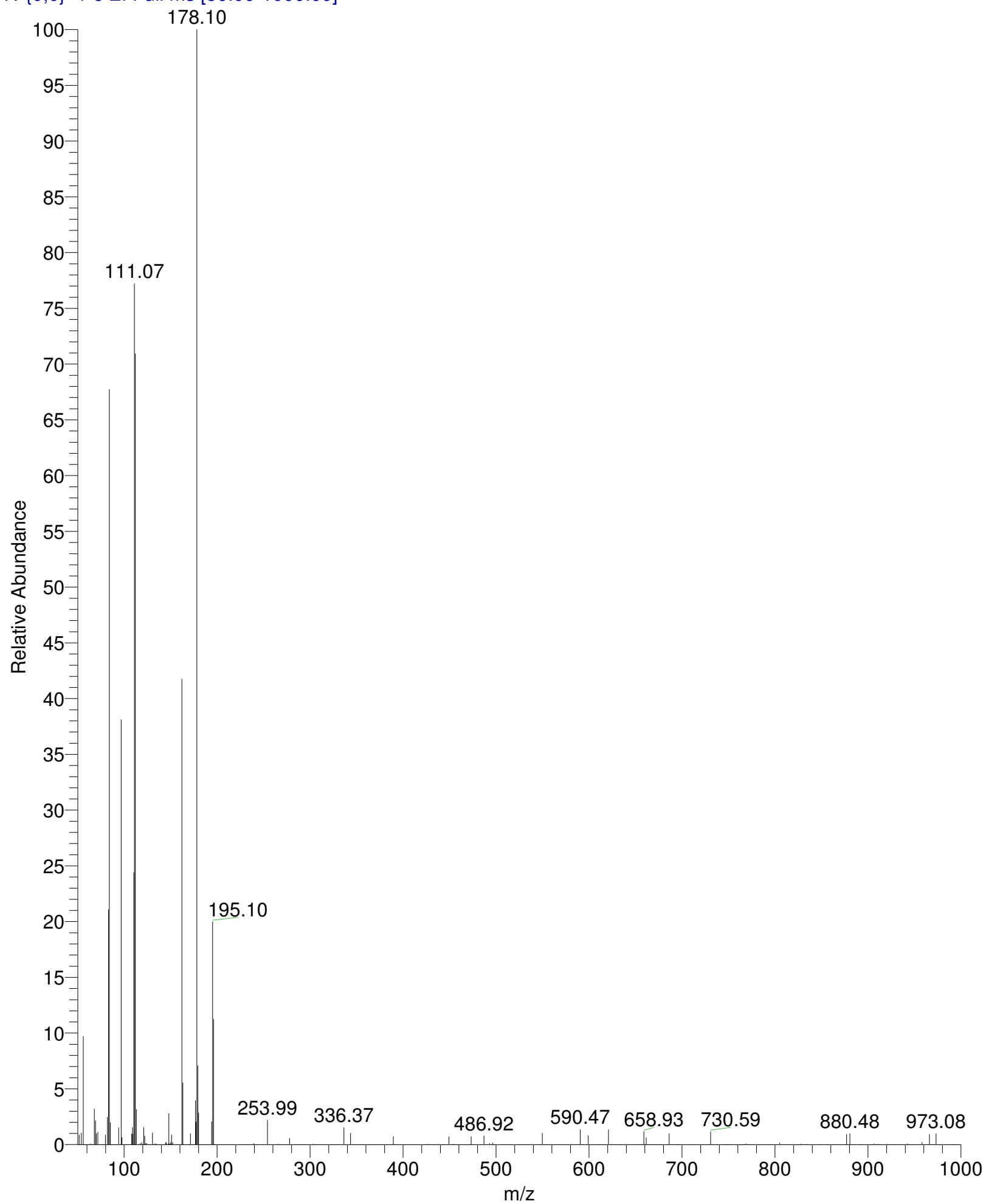
RT: 0.00 - 4.18

NL:
1.95E6
TIC MS
Selwan-60



Selwan-60 #59 RT: 0.23 AV: 1 NL: 3.22E4

T: {0,0} + c EI Full ms [50.00-1000.00]



Selwan-60#59 RT: 0.23

T: {0,0} + c EI Full ms [50.00-1000.00]

m/z= 50.00-1000.04

m/z	Intensity	Relative
50.18	0.0	0.00
51.56	281.8	0.88
52.55	0.0	0.00
53.30	2.8	0.01
53.92	331.8	1.03
54.71	0.0	0.00
55.99	3124.4	9.71
56.72	0.0	0.00
57.56	0.0	0.00
58.43	0.0	0.00
58.97	0.0	0.00
59.65	0.4	0.00
60.17	0.0	0.00
60.72	0.0	0.00
61.42	0.0	0.00
62.78	0.0	0.00
63.70	25.9	0.08
64.70	0.0	0.00
65.78	0.0	0.00
66.30	0.0	0.00
67.31	0.1	0.00
67.98	1028.6	3.20
69.13	692.4	2.15
69.97	318.6	0.99
70.96	0.0	0.00
71.68	360.7	1.12
73.09	0.1	0.00
74.70	1.0	0.00
75.36	0.0	0.00
76.33	0.1	0.00
77.15	0.0	0.00
77.90	0.0	0.00
78.70	0.3	0.00
79.26	1.9	0.01
79.88	279.9	0.87
80.93	5.2	0.02
81.83	796.3	2.47
83.08	6781.7	21.07
84.01	21800.0	67.73
85.00	636.6	1.98
85.93	0.0	0.00
86.87	0.0	0.00
88.17	0.1	0.00
89.12	0.0	0.00
89.83	0.0	0.00
90.49	0.2	0.00
91.75	0.1	0.00
92.38	0.0	0.00
93.97	491.6	1.53
96.84	12263.4	38.10
97.52	207.2	0.64
98.82	0.3	0.00
99.50	0.0	0.00
100.15	0.0	0.00
101.46	0.0	0.00

Selwan-60#59 RT: 0.23

T: {0,0} + c EI Full ms [50.00-1000.00]

m/z= 50.00-1000.04

m/z	Intensity	Relative
101.97	0.0	0.00
102.61	0.0	0.00
103.43	0.0	0.00
104.20	0.0	0.00
105.07	0.0	0.00
105.60	0.0	0.00
106.39	0.0	0.00
107.31	0.0	0.00
108.09	314.4	0.98
108.88	496.5	1.54
109.39	302.7	0.94
110.40	7852.8	24.40
111.07	24854.6	77.22
112.05	22830.7	70.94
113.07	1016.3	3.16
114.25	0.0	0.00
115.28	0.0	0.00
116.05	0.0	0.00
117.36	37.9	0.12
117.93	0.0	0.00
118.86	60.2	0.19
119.57	0.0	0.00
120.07	0.0	0.00
121.11	497.2	1.54
122.00	244.6	0.76
123.25	34.3	0.11
124.12	30.0	0.09
125.28	1.6	0.00
126.00	0.0	0.00
126.80	0.0	0.00
127.67	0.0	0.00
128.34	0.0	0.00
128.88	0.0	0.00
130.34	337.2	1.05
131.99	1.6	0.00
132.90	24.9	0.08
134.17	25.4	0.08
135.00	0.2	0.00
137.44	0.1	0.00
138.04	0.0	0.00
138.59	0.0	0.00
139.49	0.0	0.00
140.61	0.0	0.00
141.79	0.0	0.00
143.05	0.0	0.00
143.66	0.0	0.00
144.60	61.3	0.19
145.27	57.2	0.18
146.44	0.0	0.00
147.33	27.5	0.09
147.97	897.5	2.79
149.05	24.0	0.07
150.20	62.6	0.19
150.89	282.9	0.88
151.47	0.3	0.00

Selwan-60#59 RT: 0.23

T: {0,0} + c EI Full ms [50.00-1000.00]

m/z= 50.00-1000.04

m/z	Intensity	Relative
152.16	53.8	0.17
152.78	0.1	0.00
154.21	0.0	0.00
156.36	0.0	0.00
157.22	0.0	0.00
157.87	0.0	0.00
158.44	0.0	0.00
158.97	0.1	0.00
160.04	0.0	0.00
162.04	13439.3	41.76
163.00	1783.1	5.54
163.71	0.2	0.00
164.38	1.0	0.00
165.19	0.0	0.00
166.71	0.0	0.00
167.93	0.0	0.00
168.45	0.0	0.00
169.13	0.0	0.00
169.80	0.0	0.00
170.65	0.2	0.00
171.16	316.6	0.98
171.77	0.0	0.00
172.38	0.0	0.00
174.01	0.0	0.00
174.70	0.2	0.00
176.68	1271.8	3.95
177.31	655.7	2.04
178.10	32185.4	100.00
179.18	2279.9	7.08
179.97	919.6	2.86
181.18	0.0	0.00
181.70	0.0	0.00
183.32	0.0	0.00
187.22	0.0	0.00
187.81	0.0	0.00
188.86	1.4	0.00
189.80	1.0	0.00
190.68	0.2	0.00
191.46	0.0	0.00
192.33	0.1	0.00
193.26	1.3	0.00
194.09	657.8	2.04
195.10	6434.5	19.99
196.14	3617.7	11.24
196.81	0.0	0.00
197.43	0.0	0.00
198.16	0.0	0.00
198.82	0.0	0.00
201.48	0.0	0.00
202.18	0.0	0.00
204.72	0.0	0.00
205.40	0.0	0.00
206.21	0.0	0.00
207.39	0.0	0.00
209.68	0.0	0.00

Selwan-60#59 RT: 0.23

T: {0,0} + c EI Full ms [50.00-1000.00]

m/z= 50.00-1000.04

m/z	Intensity	Relative
211.80	0.0	0.00
212.46	0.0	0.00
215.57	0.0	0.00
216.95	0.0	0.00
218.21	0.0	0.00
219.22	0.0	0.00
219.82	0.0	0.00
220.89	0.0	0.00
224.32	0.0	0.00
225.58	0.0	0.00
226.79	0.0	0.00
228.14	0.0	0.00
229.61	0.0	0.00
230.23	0.0	0.00
231.75	0.0	0.00
232.95	0.0	0.00
234.13	0.0	0.00
236.20	0.1	0.00
238.20	0.0	0.00
238.82	0.4	0.00
239.41	29.7	0.09
240.27	0.0	0.00
241.09	0.0	0.00
241.97	0.0	0.00
243.30	0.0	0.00
244.58	0.0	0.00
246.26	0.0	0.00
247.06	0.0	0.00
248.27	0.0	0.00
249.33	0.0	0.00
251.73	0.0	0.00
253.99	703.8	2.19
255.37	0.0	0.00
256.36	0.0	0.00
258.25	0.0	0.00
259.21	0.0	0.00
261.71	1.0	0.00
262.42	0.0	0.00
263.33	0.0	0.00
264.04	0.0	0.00
265.64	19.9	0.06
266.77	0.0	0.00
268.67	0.0	0.00
269.20	0.0	0.00
269.81	0.0	0.00
272.33	0.0	0.00
273.19	0.0	0.00
274.61	0.0	0.00
275.34	0.0	0.00
276.95	0.0	0.00
277.85	184.5	0.57
279.47	1.0	0.00
282.10	0.5	0.00
284.12	0.0	0.00
285.31	0.0	0.00

Selwan-60#59 RT: 0.23

T: {0,0} + c EI Full ms [50.00-1000.00]

m/z= 50.00-1000.04

m/z	Intensity	Relative
285.93	0.0	0.00
286.65	0.0	0.00
287.60	0.0	0.00
289.29	0.0	0.00
290.60	0.0	0.00
291.43	0.0	0.00
292.06	0.1	0.00
293.08	0.0	0.00
294.13	0.0	0.00
295.52	0.0	0.00
297.21	0.0	0.00
298.56	0.0	0.00
299.22	0.0	0.00
300.54	0.0	0.00
301.16	0.0	0.00
302.78	15.2	0.05
304.29	0.0	0.00
306.00	1.6	0.00
306.51	0.0	0.00
307.89	0.2	0.00
309.06	0.0	0.00
310.67	1.0	0.00
311.19	0.0	0.00
312.85	0.0	0.00
314.36	0.0	0.00
315.11	0.0	0.00
317.85	0.0	0.00
318.66	0.0	0.00
319.45	0.0	0.00
323.57	0.0	0.00
324.56	0.0	0.00
325.37	0.0	0.00
326.07	0.0	0.00
327.25	0.0	0.00
327.77	0.0	0.00
329.21	0.0	0.00
330.13	0.0	0.00
330.64	0.0	0.00
331.19	0.0	0.00
332.16	0.0	0.00
335.33	0.1	0.00
336.37	492.8	1.53
338.06	0.0	0.00
338.94	0.0	0.00
343.43	329.4	1.02
344.30	1.6	0.00
345.40	0.0	0.00
345.91	0.0	0.00
346.45	0.0	0.00
347.18	0.0	0.00
349.04	0.0	0.00
351.42	0.0	0.00
353.20	0.0	0.00
353.86	0.0	0.00
355.39	0.0	0.00

Selwan-60#59 RT: 0.23

T: {0,0} + c EI Full ms [50.00-1000.00]

m/z= 50.00-1000.04

m/z	Intensity	Relative
356.53	0.0	0.00
357.05	0.0	0.00
358.22	0.0	0.00
359.04	0.0	0.00
359.86	0.0	0.00
360.83	0.0	0.00
361.83	0.0	0.00
363.04	0.0	0.00
363.72	0.0	0.00
364.94	0.0	0.00
367.72	0.0	0.00
368.44	0.0	0.00
369.31	0.4	0.00
370.86	0.0	0.00
371.49	0.0	0.00
372.01	0.0	0.00
373.01	1.6	0.00
373.61	0.0	0.00
375.30	1.0	0.00
377.49	0.0	0.00
378.75	0.0	0.00
380.08	0.0	0.00
381.62	0.0	0.00
382.51	0.0	0.00
383.41	1.9	0.01
384.32	0.0	0.00
385.27	0.0	0.00
386.16	0.0	0.00
387.10	0.0	0.00
388.39	0.0	0.00
389.50	231.9	0.72
390.30	0.0	0.00
391.18	0.0	0.00
392.31	0.0	0.00
392.91	0.0	0.00
394.32	0.4	0.00
395.06	0.4	0.00
396.00	0.0	0.00
397.90	0.0	0.00
399.71	0.0	0.00
400.92	0.0	0.00
402.00	0.0	0.00
402.90	0.0	0.00
403.90	0.0	0.00
407.42	1.6	0.00
407.93	0.0	0.00
408.84	0.0	0.00
409.68	0.0	0.00
410.25	0.0	0.00
411.90	0.0	0.00
412.57	0.0	0.00
413.71	0.0	0.00
415.94	0.0	0.00
416.97	0.0	0.00
420.54	0.0	0.00

Selwan-60#59 RT: 0.23

T: {0,0} + c EI Full ms [50.00-1000.00]

m/z= 50.00-1000.04

m/z	Intensity	Relative
423.62	0.0	0.00
424.37	2.2	0.01
426.96	14.9	0.05
427.96	0.1	0.00
428.61	0.0	0.00
429.16	0.0	0.00
430.30	0.0	0.00
431.11	0.0	0.00
431.91	0.0	0.00
432.57	0.0	0.00
433.16	0.0	0.00
433.98	0.0	0.00
434.66	0.0	0.00
437.64	10.2	0.03
439.00	0.0	0.00
439.80	0.0	0.00
441.58	0.0	0.00
442.73	0.0	0.00
443.54	7.8	0.02
446.87	0.0	0.00
447.77	0.0	0.00
449.35	226.9	0.70
451.70	0.0	0.00
452.69	0.0	0.00
454.13	13.0	0.04
455.30	0.0	0.00
455.89	0.0	0.00
459.00	0.0	0.00
460.88	0.0	0.00
461.46	0.0	0.00
462.74	0.0	0.00
465.62	0.0	0.00
466.25	0.0	0.00
467.45	0.0	0.00
468.29	0.0	0.00
469.32	0.0	0.00
471.15	0.0	0.00
472.29	1.6	0.00
473.13	232.4	0.72
473.99	0.0	0.00
475.96	0.0	0.00
478.62	0.0	0.00
480.02	0.0	0.00
480.69	0.0	0.00
482.04	0.0	0.00
483.83	0.0	0.00
486.92	256.6	0.80
487.54	0.0	0.00
488.55	0.0	0.00
489.54	0.0	0.00
492.97	38.9	0.12
493.48	0.0	0.00
494.60	1.0	0.00
495.25	0.0	0.00
496.34	50.1	0.16

Selwan-60#59 RT: 0.23

T: {0,0} + c EI Full ms [50.00-1000.00]

m/z= 50.00-1000.04

m/z	Intensity	Relative
497.33	0.2	0.00
497.99	0.0	0.00
498.69	2.1	0.01
499.26	0.0	0.00
500.93	0.0	0.00
505.11	0.0	0.00
505.94	0.0	0.00
507.29	0.0	0.00
509.63	0.1	0.00
510.95	0.0	0.00
512.16	0.0	0.00
513.04	2.5	0.01
514.15	0.0	0.00
515.96	0.2	0.00
518.04	0.0	0.00
523.15	0.4	0.00
523.92	0.0	0.00
524.43	0.0	0.00
524.93	0.0	0.00
526.75	0.0	0.00
528.01	0.0	0.00
529.29	0.4	0.00
529.81	0.0	0.00
530.50	0.0	0.00
531.59	1.6	0.00
533.16	0.0	0.00
535.23	0.3	0.00
535.90	0.0	0.00
536.69	0.1	0.00
539.27	1.9	0.01
539.79	0.0	0.00
541.41	0.0	0.00
543.87	1.3	0.00
546.70	0.0	0.00
547.52	0.0	0.00
548.23	0.3	0.00
549.79	326.7	1.02
551.49	1.9	0.01
552.49	0.0	0.00
553.26	0.0	0.00
554.64	0.0	0.00
555.36	0.0	0.00
556.04	0.0	0.00
556.90	0.0	0.00
558.51	0.0	0.00
559.99	0.0	0.00
561.56	0.0	0.00
564.41	0.0	0.00
566.21	0.2	0.00
567.29	0.0	0.00
568.10	0.0	0.00
568.69	0.0	0.00
570.30	0.0	0.00
571.68	0.0	0.00
572.29	0.0	0.00

Selwan-60#59 RT: 0.23

T: {0,0} + c EI Full ms [50.00-1000.00]

m/z= 50.00-1000.04

m/z	Intensity	Relative
572.92	1.3	0.00
575.23	0.0	0.00
577.65	0.0	0.00
578.24	0.0	0.00
580.27	0.0	0.00
581.16	0.0	0.00
581.85	0.0	0.00
582.83	0.0	0.00
583.95	0.0	0.00
586.34	1.6	0.00
588.56	0.0	0.00
589.41	0.0	0.00
589.92	0.0	0.00
590.47	437.2	1.36
591.23	0.0	0.00
592.19	0.0	0.00
592.96	0.0	0.00
593.90	0.0	0.00
595.78	0.0	0.00
597.35	0.0	0.00
598.30	0.0	0.00
599.17	259.8	0.81
600.06	0.1	0.00
601.37	0.0	0.00
602.18	0.0	0.00
604.32	0.0	0.00
605.46	0.0	0.00
606.58	0.0	0.00
607.23	0.0	0.00
609.38	0.0	0.00
609.93	0.0	0.00
611.29	1.6	0.00
612.02	0.0	0.00
613.08	0.0	0.00
613.78	1.6	0.00
615.18	1.6	0.00
615.90	0.0	0.00
616.94	0.1	0.00
618.98	0.0	0.00
620.25	0.0	0.00
620.82	432.3	1.34
623.74	10.8	0.03
624.59	0.0	0.00
627.00	0.0	0.00
627.50	0.0	0.00
628.19	0.0	0.00
628.99	0.0	0.00
629.64	0.0	0.00
632.01	0.0	0.00
633.01	0.0	0.00
634.13	0.0	0.00
635.13	0.0	0.00
636.16	0.1	0.00
638.20	0.0	0.00
639.10	0.0	0.00

Selwan-60#59 RT: 0.23

T: {0,0} + c EI Full ms [50.00-1000.00]

m/z= 50.00-1000.04

m/z	Intensity	Relative
639.63	0.0	0.00
641.79	0.0	0.00
642.79	0.0	0.00
647.66	0.0	0.00
648.67	0.0	0.00
649.86	0.0	0.00
650.73	0.0	0.00
652.88	0.0	0.00
654.41	0.0	0.00
655.48	2.2	0.01
656.03	0.0	0.00
657.03	0.0	0.00
657.64	0.0	0.00
658.93	376.0	1.17
660.08	0.0	0.00
661.34	197.6	0.61
662.88	0.0	0.00
663.40	0.0	0.00
663.97	0.0	0.00
664.93	0.0	0.00
665.68	0.0	0.00
666.78	0.0	0.00
667.93	0.0	0.00
668.60	0.0	0.00
669.32	0.0	0.00
670.07	1.3	0.00
671.08	0.0	0.00
672.38	0.0	0.00
673.58	0.0	0.00
674.56	0.0	0.00
675.79	0.0	0.00
676.69	0.0	0.00
677.21	0.0	0.00
678.90	0.0	0.00
679.72	0.0	0.00
681.36	0.0	0.00
683.25	1.6	0.00
684.54	1.9	0.01
685.59	0.0	0.00
686.21	317.7	0.99
688.34	0.0	0.00
688.85	0.0	0.00
690.08	11.0	0.03
692.55	1.0	0.00
693.40	0.0	0.00
693.91	0.0	0.00
695.22	8.4	0.03
696.56	1.3	0.00
697.35	0.0	0.00
698.24	0.1	0.00
699.73	1.0	0.00
701.71	0.0	0.00
703.05	0.0	0.00
705.21	0.0	0.00
707.36	0.0	0.00

Selwan-60#59 RT: 0.23

T: {0,0} + c EI Full ms [50.00-1000.00]

m/z= 50.00-1000.04

m/z	Intensity	Relative
708.22	0.0	0.00
708.99	0.0	0.00
710.55	0.0	0.00
711.28	0.0	0.00
712.25	0.0	0.00
715.01	0.0	0.00
717.21	0.0	0.00
720.30	0.0	0.00
721.28	0.0	0.00
722.32	0.0	0.00
723.10	0.0	0.00
723.73	0.0	0.00
725.25	0.0	0.00
726.16	1.8	0.01
727.92	0.0	0.00
728.90	0.0	0.00
729.75	0.0	0.00
730.59	371.1	1.15
731.60	0.0	0.00
732.50	0.1	0.00
733.69	0.0	0.00
734.41	0.0	0.00
735.93	0.0	0.00
737.42	0.0	0.00
737.99	2.8	0.01
739.03	1.3	0.00
740.16	0.0	0.00
741.18	0.0	0.00
744.66	0.0	0.00
746.54	0.3	0.00
747.17	0.0	0.00
748.20	10.8	0.03
748.74	0.0	0.00
749.53	0.0	0.00
750.56	0.0	0.00
752.20	0.0	0.00
752.77	0.0	0.00
753.57	0.0	0.00
754.61	3.7	0.01
756.08	0.0	0.00
757.10	0.0	0.00
758.09	0.0	0.00
758.91	0.0	0.00
761.82	0.0	0.00
762.49	0.0	0.00
763.51	0.0	0.00
764.96	0.0	0.00
765.84	1.8	0.01
766.51	0.0	0.00
767.18	0.0	0.00
767.85	1.3	0.00
768.67	26.3	0.08
769.24	0.0	0.00
769.94	0.0	0.00
770.49	0.0	0.00

Selwan-60#59 RT: 0.23

T: {0,0} + c EI Full ms [50.00-1000.00]

m/z= 50.00-1000.04

m/z	Intensity	Relative
771.70	0.0	0.00
772.26	0.0	0.00
773.34	0.0	0.00
774.17	0.0	0.00
775.93	0.0	0.00
776.46	0.0	0.00
777.33	0.0	0.00
778.15	0.0	0.00
779.93	0.0	0.00
780.48	0.0	0.00
781.62	0.0	0.00
782.76	0.0	0.00
783.36	0.0	0.00
784.26	0.0	0.00
787.05	1.8	0.01
788.79	0.0	0.00
789.66	0.0	0.00
790.25	0.0	0.00
790.91	0.0	0.00
793.71	0.7	0.00
795.03	0.0	0.00
796.12	0.0	0.00
796.83	0.0	0.00
798.31	0.1	0.00
800.52	0.0	0.00
801.69	0.0	0.00
803.09	0.1	0.00
803.63	0.0	0.00
804.90	45.8	0.14
805.83	0.0	0.00
807.92	0.0	0.00
809.04	0.0	0.00
811.11	0.0	0.00
812.29	0.0	0.00
813.20	0.1	0.00
814.57	0.1	0.00
815.84	0.0	0.00
817.54	0.0	0.00
819.18	0.0	0.00
820.48	0.0	0.00
821.04	0.0	0.00
821.76	0.0	0.00
822.42	0.0	0.00
824.45	1.9	0.01
826.04	0.0	0.00
827.84	14.8	0.05
828.38	0.0	0.00
831.19	0.0	0.00
832.14	0.0	0.00
833.84	13.0	0.04
834.73	0.0	0.00
837.41	0.0	0.00
844.15	0.0	0.00
846.00	0.0	0.00
847.08	0.0	0.00

Selwan-60#59 RT: 0.23

T: {0,0} + c EI Full ms [50.00-1000.00]

m/z= 50.00-1000.04

m/z	Intensity	Relative
847.64	0.0	0.00
848.91	0.0	0.00
850.04	0.0	0.00
851.39	0.0	0.00
854.99	4.2	0.01
856.32	0.0	0.00
857.23	0.0	0.00
857.82	0.0	0.00
858.80	0.1	0.00
860.54	0.0	0.00
862.23	0.0	0.00
863.75	0.0	0.00
864.41	0.0	0.00
865.35	0.0	0.00
866.21	0.7	0.00
867.14	0.0	0.00
868.73	0.0	0.00
870.38	0.0	0.00
872.56	0.0	0.00
874.19	0.0	0.00
874.89	0.0	0.00
875.59	0.0	0.00
876.30	0.0	0.00
876.98	296.3	0.92
877.65	0.0	0.00
878.86	0.0	0.00
879.51	0.0	0.00
880.48	319.6	0.99
883.16	0.0	0.00
885.24	0.0	0.00
886.60	0.0	0.00
890.63	0.0	0.00
891.93	0.0	0.00
892.50	8.4	0.03
894.89	0.0	0.00
896.71	0.0	0.00
898.86	0.0	0.00
901.11	0.0	0.00
901.98	0.0	0.00
902.48	0.0	0.00
903.37	0.0	0.00
904.28	1.6	0.00
906.55	27.5	0.09
907.39	0.0	0.00
908.49	0.0	0.00
909.17	0.4	0.00
910.35	13.0	0.04
910.87	0.0	0.00
912.10	0.0	0.00
912.64	0.4	0.00
914.73	0.0	0.00
915.32	0.0	0.00
916.32	0.3	0.00
917.33	0.0	0.00
918.69	0.0	0.00

Selwan-60#59 RT: 0.23

T: {0,0} + c EI Full ms [50.00-1000.00]

m/z= 50.00-1000.04

m/z	Intensity	Relative
921.01	13.3	0.04
921.75	0.0	0.00
923.36	0.0	0.00
924.48	0.0	0.00
925.88	0.0	0.00
926.61	0.0	0.00
927.69	0.0	0.00
928.60	0.0	0.00
929.46	0.0	0.00
929.97	0.0	0.00
931.83	0.0	0.00
933.17	0.0	0.00
933.71	0.0	0.00
934.65	0.0	0.00
936.43	0.0	0.00
937.59	0.0	0.00
939.40	0.0	0.00
940.32	0.0	0.00
942.40	24.8	0.08
943.44	0.0	0.00
944.15	0.0	0.00
946.06	0.0	0.00
946.62	0.0	0.00
948.18	0.0	0.00
948.69	0.0	0.00
950.16	0.0	0.00
953.70	0.0	0.00
956.01	0.3	0.00
957.58	0.0	0.00
958.11	60.3	0.19
959.05	1.0	0.00
959.59	0.0	0.00
961.20	0.0	0.00
961.73	0.0	0.00
962.66	0.0	0.00
963.56	0.0	0.00
964.15	0.0	0.00
966.03	295.8	0.92
967.02	0.1	0.00
968.48	0.0	0.00
969.26	0.0	0.00
970.17	0.0	0.00
971.11	0.0	0.00
972.32	0.0	0.00
973.08	316.1	0.98
974.32	0.0	0.00
975.84	0.1	0.00
976.43	0.0	0.00
977.80	0.0	0.00
978.63	0.0	0.00
979.42	0.9	0.00
983.47	1.6	0.00
985.07	0.0	0.00
988.43	0.0	0.00
990.26	0.0	0.00

Selwan-60#59 RT: 0.23

T: {0,0} + c EI Full ms [50.00-1000.00]

m/z= 50.00-1000.04

m/z	Intensity	Relative
991.15	0.2	0.00
992.21	0.1	0.00
992.85	2.2	0.01
994.08	1.3	0.00
995.35	0.0	0.00
997.03	0.0	0.00
997.79	0.1	0.00
999.78	0.0	0.00